



GMT MONTHLY MEMBERSHIP PROGRESS REPORT

Results as of: 4/30/2019

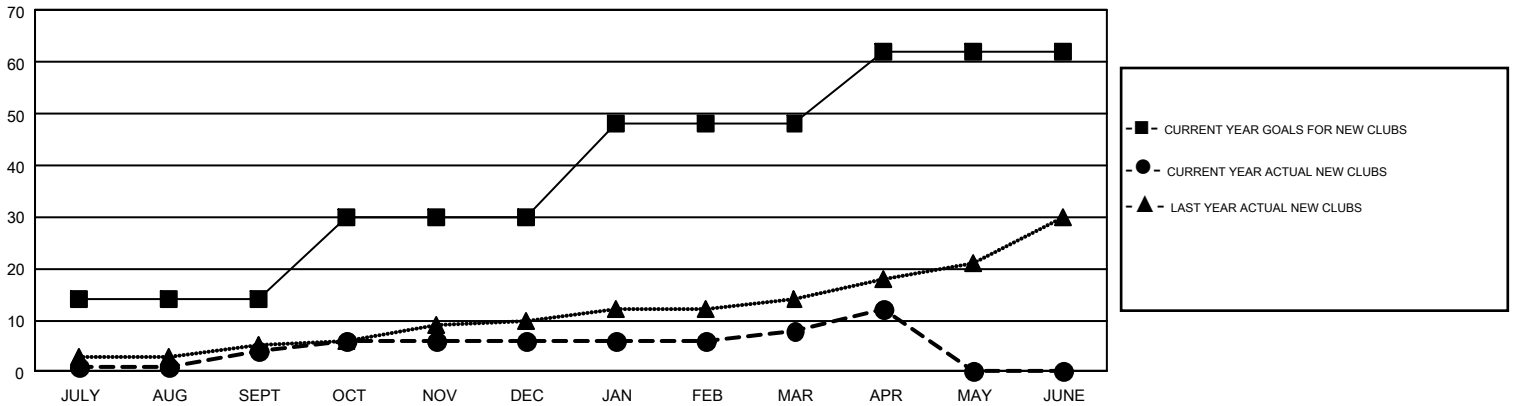
GMT Constitutional Area 1, Group F

GMT: GREGORY GILLIAM

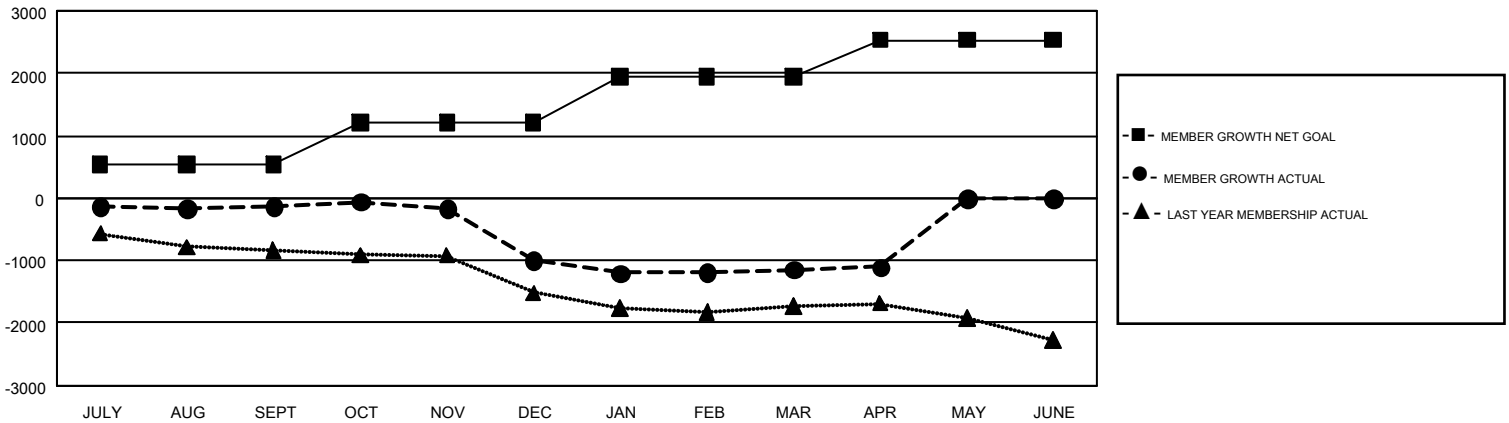
REPORT DOES NOT INCLUDE CLUBS IN UNDISTRICTED AREAS.

Clubs				Members			
RESULTS FOR 2018-2019				RESULTS FOR 2018-2019			
QUARTER	NEW CLUB GOAL	NEW CLUBS	DROPPED CLUBS	QUARTER	MEMBER GROWTH NET GOAL	MEMBER GROWTH ACTUAL	DROPPED MEMBERS ACTUAL (including transfers)
JULY/AUG/SEPT	14	4	8	JULY/AUG/SEPT	536	1,353	1,323
OCT/NOV/DEC	16	2	19	OCT/NOV/DEC	669	1,116	1,902
JAN/FEB/MAR	18	2	9	JAN/FEB/MAR	735	1,340	1,308
APR/MAY/JUNE	14	4	3	APR/MAY/JUNE	594	522	465

GOALS AND ACTUAL NEW CLUBS CUMULATIVE



GOALS AND ACTUAL MEMBERS CUMULATIVE



DROPPED CLUBS: 39	935 CLUBS OF 1,615 ADDED 1 OR MORE NEW MEMBERS	<u>GENDER DISTRIBUTION</u>
<u>DROPPED MEMBERS</u>		MALE 29,125 (66.61%)
DECEASED 446		FEMALE 14,601 (33.39%)
CLUB CANCELLED 238	CLICK HERE FOR CUMULATIVE MEMBERSHIP DATA	TOTAL FAMILY UNIT MEMBERS 6,924
OTHER 4,310		FAMILY MEMBERS PAYING HALF DUES 3,545
TOTAL 4,994		